

# Interface control of multi-phase flow

Markus Klein

joint work with L. Banas and A. Prohl

Department of Mathematics  
University of Tübingen

GAMM 2014  
Erlangen, 2014-03-13



1 Introduction and Motivation

2 Analysis

3 Numerical Analysis

1 Introduction and Motivation

2 Analysis

3 Numerical Analysis

# The Model

- $\rho_0 = \rho_1 \chi_{\Omega_1} + \rho_2 \chi_{\Omega_2}$  mixture of two immiscible viscous incompressible fluids in a bounded domain in  $\mathbb{R}^2$ .
- Multi-phase flow evolution by Navier–Stokes Eq. (cf. [Lions, 1996])

$$(NSE) \begin{cases} \rho \mathbf{y}_t + \rho [\mathbf{y} \cdot \nabla] \mathbf{y} - \mu \Delta \mathbf{y} + \nabla p = \rho \mathbf{u}, & \mathbf{y}(0) = \mathbf{y}_0, \\ \rho_t + [\mathbf{y} \cdot \nabla] \rho = 0, & \rho(0) = \rho_0, \\ \operatorname{div} \mathbf{y} = 0 & + B.C. \end{cases}$$

# The Model

- $\rho_0 = \rho_1 \chi_{\Omega_1} + \rho_2 \chi_{\Omega_2}$  mixture of two immiscible viscous incompressible fluids in a bounded domain in  $\mathbb{R}^2$ .
- Multi-phase flow evolution by Navier–Stokes Eq. (cf. [Lions, 1996])

Minimize

“Shape”

“Geometry”

“Cost”

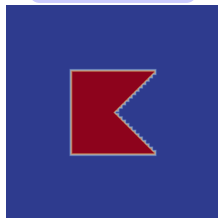
$$J(\rho, \mathbf{u}) = \int_0^T \int_{\Omega} |\rho(t) - \sigma|^2 \, d\mathbf{x} \, dt + \frac{\beta}{2} \int_0^T \mathcal{H}^1(S_\rho) \, dt + \frac{\alpha}{2} \int_0^T \int_{\Omega} |\mathbf{u}|^2 \, d\mathbf{x} \, dt$$

subject to

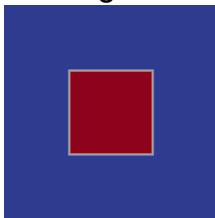
$$(NSE) \begin{cases} \rho \mathbf{y}_t + \rho [\mathbf{y} \cdot \nabla] \mathbf{y} - \mu \Delta \mathbf{y} + \nabla p = \rho \mathbf{u}, & \mathbf{y}(0) = \mathbf{y}_0, \\ \rho_t + [\mathbf{y} \cdot \nabla] \rho = 0, & \rho(0) = \rho_0, \\ \operatorname{div} \mathbf{y} = 0 & + B.C. \end{cases}$$

# Evidence of the geometric functional

$$\|\rho - \sigma\|_{L^2(\Omega_T)}^2$$

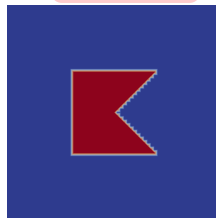


**Target**  $\sigma$



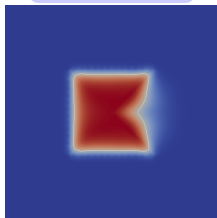
$$\|\rho - \sigma\|_{L^2(\Omega_T)}^2$$

$$+ \int_0^T \mathcal{H}^1(S_\rho)$$

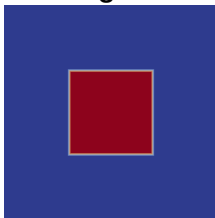


# Evidence of the geometric functional

$$\|\rho - \sigma\|_{L^2(\Omega_T)}^2$$

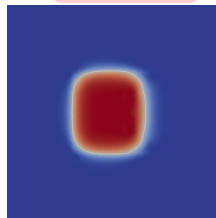


**Target**  $\sigma$



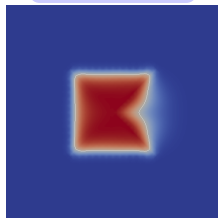
$$\|\rho - \sigma\|_{L^2(\Omega_T)}^2$$

$$+ \int_0^T \mathcal{H}^1(S_\rho)$$



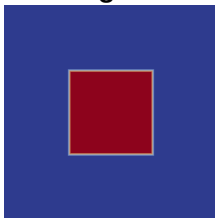
# Evidence of the geometric functional

$$\|\rho - \sigma\|_{L^2(\Omega_T)}^2$$



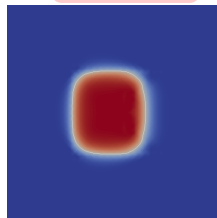
better corners

**Target**  $\sigma$



$$\|\rho - \sigma\|_{L^2(\Omega_T)}^2$$

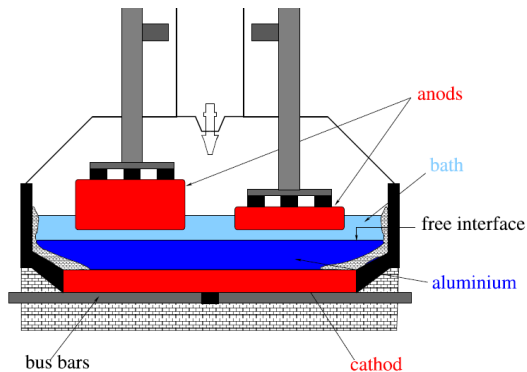
$$+ \int_0^T \mathcal{H}^1(S_\rho)$$



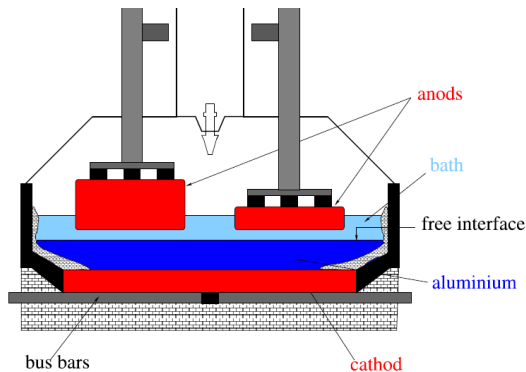
correct geometry



# Application ([Gerbeau et al., 2006]): Aluminium production via electrolysis



# Application ([Gerbeau et al., 2006]): Aluminium production via electrolysis



Anods shall not touch the interface!  
⇒ Interface control

## Goals

- Existence of optimum.
- (Necessary) first order optimality conditions.
- Numerical scheme with low order Finite Elements.
- Convergence of the numerical scheme.

## Known result

- Optimization (analysis, no numerics) of  $L^2$ -functional (no geometric term) subject to Stokes equation, cf. [Kunisch and Lu, 2011].
- Convergent numerical scheme for equation (low regularity), cf. [Bañas and Prohl, 2010].

1 Introduction and Motivation

2 Analysis

3 Numerical Analysis

# Analytical problems and strategy

Minimize

$$J(\rho, \mathbf{u}) = \int_0^T \int_{\Omega} |\rho(t) - \sigma|^2 \, d\mathbf{x} \, dt + \frac{\beta}{2} \int_0^T \mathcal{H}^1(S_{\rho}) \, dt + \frac{\alpha}{2} \int_0^T \int_{\Omega} |\mathbf{u}|^2 \, d\mathbf{x} \, dt$$

subject to

$$(NSE) \begin{cases} \rho \mathbf{y}_t + \rho[\mathbf{y} \cdot \nabla] \mathbf{y} - \mu \Delta \mathbf{y} + \nabla p = \rho \mathbf{u}, & \mathbf{y}(0) = \mathbf{y}_0, \\ \rho_t + [\mathbf{y} \cdot \nabla] \rho = 0, & \rho(0) = \rho_0, \\ \operatorname{div} \mathbf{y} = 0 & + B.C. \end{cases}$$

- **Problem:** Not clear if red term is w.l.s.c., and not clear if corresponding Lagrange multiplier to mass equation exists and is a function.

# Analytical problems and strategy

Minimize

$$J(\rho, \mathbf{u}) = \int_0^T \int_{\Omega} |\rho(t) - \sigma|^2 \, d\mathbf{x} \, dt + \frac{\beta}{2} \int_0^T \mathcal{H}^1(S_{\rho}) \, dt + \frac{\alpha}{2} \int_0^T \int_{\Omega} |\mathbf{u}|^2 \, d\mathbf{x} \, dt$$

subject to

$$(NSE) \begin{cases} \rho \mathbf{y}_t + \rho[\mathbf{y} \cdot \nabla] \mathbf{y} - \mu \Delta \mathbf{y} + \nabla p = \rho \mathbf{u}, & \mathbf{y}(0) = \mathbf{y}_0, \\ \rho_t + [\mathbf{y} \cdot \nabla] \rho = 0, & \rho(0) = \rho_0, \\ \operatorname{div} \mathbf{y} = 0 & + B.C. \end{cases}$$

- **Problem:** Not clear if red term is w.l.s.c., and not clear if corresponding Lagrange multiplier to mass equation exists and is a function.
- **Solution:** Add artificial diffusion to equation and approximate Hausdorff measure (“Mortola-Modica”, cf. [Braides, 1998])

# Analytical problems and strategy

Minimize

$$J_\delta(\rho, \mathbf{u}) = \square + \frac{\beta}{2} \left( \delta \int_{\Omega_T} |\nabla \rho|^2 + \frac{1}{\delta} \int_{\Omega_T} W(\rho) \right) + \square$$

subject to

$$(NSE_\varepsilon) \begin{cases} \rho \mathbf{y}_t + \rho [\mathbf{y} \cdot \nabla] \mathbf{y} - \mu \Delta \mathbf{y} + \nabla \rho = \rho \mathbf{u}, & \mathbf{y}(0) = \mathbf{y}_0, \\ \rho_t + [\mathbf{y} \cdot \nabla] \rho - \varepsilon \Delta \rho = 0, & \rho(0) = \rho_0, \\ \operatorname{div} \mathbf{y} = 0 & + B.C. \end{cases}$$

( $W \geq 0$  double Well functional with  $W(\rho) = 0$  iff  $\rho = \rho_1$  or  $\rho = \rho_2$ )

- **Solution:** Add artificial diffusion to equation and approximate Hausdorff measure (“Mortola-Modica”, cf. [Braides, 1998])

## Theorem (Existence)

For  $\delta, \varepsilon > 0$ , there exists at least one minimum and the corresponding Lagrange multipliers belong to some  $L^p(\Omega_T)$  for  $p > 1$ .



## Theorem (Existence)

For  $\delta, \varepsilon > 0$ , there exists at least one minimum and the corresponding Lagrange multipliers belong to some  $L^p(\Omega_T)$  for  $p > 1$ .

## Proof.

Key are a priori estimates and regularity for  $\mathbf{y}$  and  $\rho$  and Lagrange multiplier theorem. □

## Theorem (Existence)

For  $\delta, \varepsilon > 0$ , there exists at least one minimum and the corresponding Lagrange multipliers belong to some  $L^p(\Omega_T)$  for  $p > 1$ .

## Proof.

Key are a priori estimates and regularity for  $\mathbf{y}$  and  $\rho$  and Lagrange multiplier theorem. □

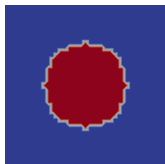
## Passing to the limit for $\varepsilon, \delta \rightarrow 0$ ?

**Necessary** condition for convergence of the whole system is

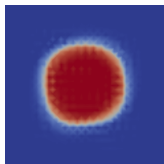
$$\delta \approx \varepsilon.$$

# Case $\varepsilon \ll \delta$ : parasitic currents

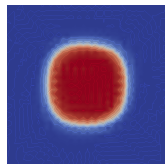
$$\min \delta \int_{\Omega_T} |\nabla \rho|^2 + \frac{1}{\delta} \int_{\Omega_T} W(\rho) \quad \text{s.t. } (NSE_\varepsilon).$$



$\rho(t = 0)$



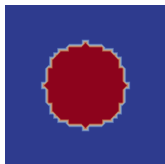
$\rho(t = 0.25)$



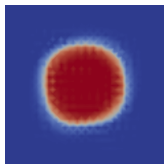
$\rho(t = 0.5)$

# Case $\varepsilon \ll \delta$ : parasitic currents

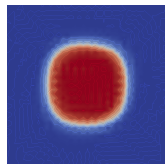
$$\min \delta \int_{\Omega_T} |\nabla \rho|^2 + \frac{1}{\delta} \int_{\Omega_T} W(\rho) \quad \text{s.t. } (NSE_\varepsilon).$$



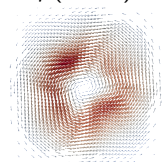
$\rho(t=0)$



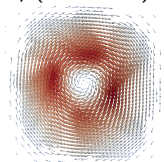
$\rho(t=0.25)$



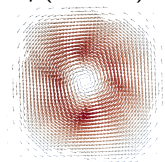
$\rho(t=0.5)$



$\mathbf{y}(t=0.05)$



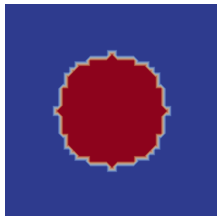
$\mathbf{y}(t=0.15)$



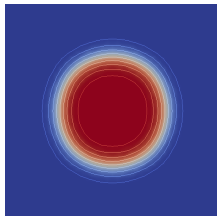
$\mathbf{y}(t=0.35)$

# Case $\varepsilon \gg \delta$ : massive diffusion

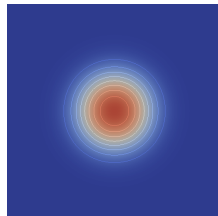
$$\min \delta \int_{\Omega_T} |\nabla \rho|^2 + \frac{1}{\delta} \int_{\Omega_T} W(\rho) \quad \text{s.t. } (NSE_\varepsilon).$$



$\rho(t = 0)$



$\rho(t = 0.5)$   
moderate  $\varepsilon$



$\rho(t = 0.5)$   
big  $\varepsilon$

1 Introduction and Motivation

2 Analysis

**3 Numerical Analysis**

## (Continuous) adjoint equation

$$\mathbf{0} = -\rho \mathbf{z}_t - \nabla q - \mu \Delta \mathbf{z} - 1/2 \rho \nabla \eta + \text{coupling with primal variables} + \dots$$

$$0 = J_\rho(\rho, \mathbf{u}) - \eta_t - \varepsilon \Delta \eta - 1/2 \mathbf{y} \cdot \mathbf{z}_t + \text{coupling with primal variables} + \dots$$

## (Continuous) adjoint equation

$$\mathbf{0} = -\rho \mathbf{z}_t - \nabla q - \mu \Delta \mathbf{z} - 1/2 \rho \nabla \eta + \text{coupling with primal variables} + \dots$$

$$0 = J_\rho(\rho, \mathbf{u}) - \eta_t - \varepsilon \Delta \eta - 1/2 \mathbf{y} \cdot \mathbf{z}_t + \text{coupling with primal variables} + \dots$$

## Problems to overcome

- Test first line with  $\mathbf{z} \Rightarrow$  Problem with **red terms**



# Problems in adjoint equation

## (Continuous) adjoint equation

$$\mathbf{0} = -\rho \mathbf{z}_t - \nabla q - \mu \Delta \mathbf{z} - 1/2 \rho \nabla \eta + \text{coupling with primal variables} + \dots$$

$$0 = J_\rho(\rho, \mathbf{u}) - \eta_t - \varepsilon \Delta \eta - 1/2 \mathbf{y} \cdot \mathbf{z}_t + \text{coupling with primal variables} + \dots$$

## Problems to overcome

- Test first line with  $\mathbf{z} \Rightarrow$  Problem with red terms
- Test second line with  $\eta \Rightarrow$  Problem with red terms

## Strategy for the discretization

- Fix  $\delta, \varepsilon > 0$ .
- Use “first discretize, then optimize” ansatz with convergent and unconditionally stable scheme, cf. [Bañas and Prohl, 2010].
- Show existence of discrete optimum, derive discrete optimality conditions.

## Strategy for the discretization

- Fix  $\delta, \varepsilon > 0$ .
- Use “first discretize, then optimize” ansatz with convergent and unconditionally stable scheme, cf. [Bañas and Prohl, 2010].
- Show existence of discrete optimum, derive discrete optimality conditions.
- Show bounds to get weak limits and identify them with cont. optimality condition.

## Strategy for the discretization

- Fix  $\delta, \varepsilon > 0$ .
- Use “first discretize, then optimize” ansatz with convergent and unconditionally stable scheme, cf. [Bañas and Prohl, 2010].
- Show existence of discrete optimum, derive discrete optimality conditions.
- Show bounds to get weak limits and identify them with cont. optimality condition.
- **Strong coupling of primal and dual variables** in the adjoint equation  
⇒ Need to bound strong norms of the primal variables

## Strategy for the discretization

- Fix  $\delta, \varepsilon > 0$ .
- Use “first discretize, then optimize” ansatz with convergent and unconditionally stable scheme, cf. [Bañas and Prohl, 2010].
- Show existence of discrete optimum, derive discrete optimality conditions.
- Show bounds to get weak limits and identify them with cont. optimality condition.
- Strong coupling of primal and dual variables in the adjoint equation  
⇒ Need to bound strong norms of the primal variables
- **Strong coupling of both dual variables** in the adjoint equation  
⇒ Need to show regularity simultaneously for both dual variables.

## Theorem (Stability)

- 1 The discrete states, adjoints and controls are uniformly (in  $h, k > 0$ ) bounded in some norms.
- 2 These functions converge to some weak limit functions in these norms (up to subsequences).

## Theorem (Stability)

- 1 The discrete states, adjoints and controls are uniformly (in  $h, k > 0$ ) bounded in some norms.
- 2 These functions converge to some weak limit functions in these norms (up to subsequences).

## Theorem (Convergence)

The limit functions solve the original fully continuous optimality system.

## Done

- New geometric functional considered with PDE constraints: Evidence, existence and optimality conditions for  $\delta, \varepsilon > 0$ .
- Rigorous convergence analysis with unconditionally stable scheme for  $\delta, \varepsilon > 0$ .
- Implementation for  $\delta, \varepsilon > 0$ .

## Outlook

- What happens for  $\varepsilon, \delta \rightarrow 0$ ? Proofs?
- Interplay between  $\delta, \varepsilon$  and numerical parameters (time step size  $k$  and grid size  $h$ )?
- Surface tension instead of geometric functional?








## Done

- New geometric functional considered with PDE constraints: Evidence, existence and optimality conditions for  $\delta, \varepsilon > 0$ .
- Rigorous convergence analysis with unconditionally stable scheme for  $\delta, \varepsilon > 0$ .
- Implementation for  $\delta, \varepsilon > 0$ .

## Outlook

- What happens for  $\varepsilon, \delta \rightarrow 0$ ? Proofs?
- Interplay between  $\delta, \varepsilon$  and numerical parameters (time step size  $k$  and grid size  $h$ )?
- Surface tension instead of geometric functional?

Thank you for your attention!

-  Bañas, Ľ. and Prohl, A. (2010). Convergent finite element discretization of the multi-fluid nonstationary incompressible magnetohydrodynamics equations. *Math. Comp.*, 79(272):1957–1999.
-  Braides, A. (1998). *Approximation of free discontinuity problems*. Number 1694 in Lecture notes in mathematics. Springer, Berlin.
-  Gerbeau, J.-F., Le Bris, C., and Lelièvre, T. (2006). *Mathematical methods for the magnetohydrodynamics of liquid metals*. Numerical mathematics and scientific computation. Oxford University Press.
-  Kunisch, K. and Lu, X. (2011). Optimal control for multi-phase fluid stokes problems. *Nonlinear Anal.*, 74(2):585–599.
-  Lions, P.-L. (1996). *Mathematical topics in fluid mechanics*, volume 1: Incompressible models of *Oxford lecture series in mathematics and its applications*. Clarendon Press.